

FIRST SUNDAY OF LENT

MARCH 6, 2022 ❖ 11:15AM MASS

INTRODUCTORY RITE

GATHERING SONG: *Led by the Spirit*

KINGSFOLD

Ritual Song Hymnal #576

PENITENTIAL ACT/KYRIE:

Chant

Hymnal Insert Card Page #1

COLLECT PRAYER

LITURGY OF THE WORD

FIRST READING:

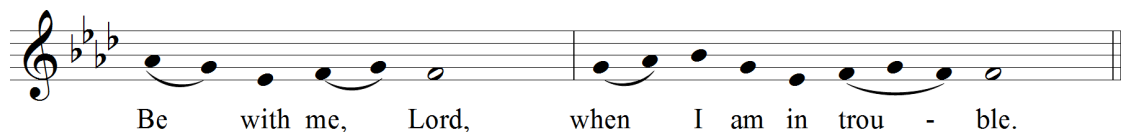
Deuteronomy 26:4-10

The confession of faith of the chosen people.

RESPONSORIAL PSALM: *Psalm 91: Be with Me, Lord*

Kelly

Refrain:



Antiphon Text © 1969, 1981, 1997, International Committee on English in the Liturgy, Inc. (ICEL)
Music by Columba Kelly, O.S.B., © 1971, 1991, The Order of Saint Benedict, Saint Meinrad Archabbey. All Rights Reserved.

Psalm 91:1-2, 10-11, 12-13, 14-15

He who dwells in the shelter of the
Most High,
and abides in the shade of the Almighty,
says to the LORD, "My refuge, my stronghold,
my God in whom I trust!" *R/.*

Upon you no evil shall fall,
no plague approach your tent.
For you has he commanded his angels
to keep you in all your ways. *R/.*

They shall bear you upon their hands,
lest you strike your foot against a stone.
On the lion and the viper you will tread,
and trample the young lion and the
serpent. *R/.*

Since he clings to me in love, I will free him,
protect him, for he knows my name.
When he calls on me, I will answer him;
I will be with him in distress;
I will deliver him, and give him glory. *R/.*

Text: *The Revised Grail Psalms*, © 2010, Conception Abbey and The Grail, admin. by GIA Publications, Inc.

SECOND READING:

Romans 10:8-13

The confession of faith of all believers in Christ.

GOSPEL ACCLAMATION: *Glory to You, O Word of God*

Proulx

Hymnal Insert Card Page #2

GOSPEL READING:

Luke 4:1-13

Jesus was led by the Spirit into the desert and was tempted.

RITE OF SENDING CATECHUMENS FOR ELECTION AND CANDIDATES FOR FULL COMMUNION FOR RECOGNITION BY THE BISHOP

This rite offers the parish community the opportunity to express their approval of the catechumens and send them forth to the celebration of election assured of the parish's care and support. In addition, those preparing for reception into the full communion of the Catholic Church are also included, since they too will be presented to the bishop at the Rite of Election.

PRESENTATION OF CATECHUMENS

AFFIRMATION BY GODPARENTS AND ASSEMBLY (*All respond "We do."*)

PRESENTATION OF THE CANDIDATES

AFFIRMATION BY SPONSORS AND ASSEMBLY (*All respond "We do."*)

INTERCESSIONS FOR CATECHUMENS, CANDIDATES AND FOR ALL

Text and music may be found on page 4 of the hymnal insert card.

DISMISSAL OF THE CANDIDATES & CATECHUMENS

Text and music for "Teach Me, O God" may be found on page 3 of the hymnal insert card.

LITURGY OF THE EUCHARIST

Our weekly collection is taken up by leaving your offering in the baskets as you enter or leave church. We are especially grateful to our visitors for your financial support.

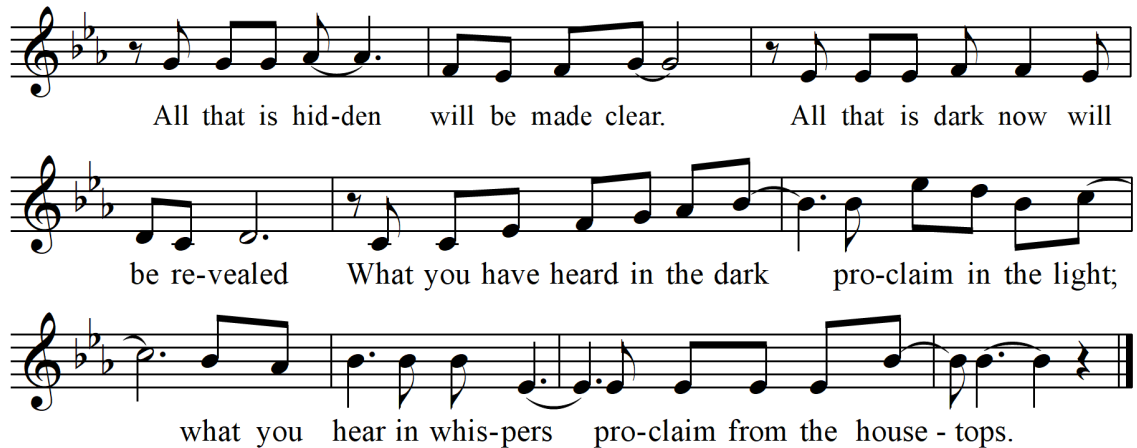
PREPARATION OF GIFTS *All That Is Hidden*

Farrell

Verses sung by Cantor, Refrain sung by all.

1. If you would follow me, follow where life will lead: do not look for me among the dead, for I am hidden in pain, risen in love; there is no harvest without sowing of grain.

Refrain: *(All)*



All that is hid-den will be made clear. All that is dark now will
be re-vealed What you have heard in the dark pro-claim in the light;
what you hear in whis-pers pro-claim from the house - tops.

2. If you would honor me, honor the least of these: you will not find me dressed in finery. My Word cries out to be heard; breaks through the world: my Word is on your lips and lives in your heart.
3. If you would speak of me, live all your life in me: my ways are not the ways that you would choose; my thoughts are far beyond yours, as heaven from earth: if you believe in me my voice will be heard.
4. If you would rise with me, rise through your destiny: do not refuse the death which brings you life, for as the grain in the earth must die for rebirth, so I have planted your life deep within mine.

EUCCHARISTIC PRAYER

HOLY, HOLY, HOLY: *Sanctus XVIII*

Chant

Hymnal Insert Card Page #5

MEMORIAL ACCLAMATION

Chant

Hymnal Insert Card Page #6

GREAT AMEN

Kelly

Hymnal Insert Card Page #6

COMMUNION RITE

LAMB OF GOD: *Agnus Dei XVIII*

Chant

Hymnal Insert Card Page #6

COMMUNION SONGS: *One Does Not Live on Bread Alone*

Kelly

Cantor: One does not live on bread alone, but on every word that comes forth from the mouth of God.

Congregational Refrain:

For you, O Lord, are my ref - uge.

The image shows a musical staff with a treble clef and a key signature of one flat (B-flat). The melody consists of the following notes: G4 (quarter), A4 (quarter), Bb4 (quarter), C5 (quarter), D5 (quarter), E5 (quarter), F5 (quarter), G5 (quarter), A5 (quarter), Bb5 (quarter), C6 (quarter), D6 (quarter), E6 (quarter), F6 (quarter), G6 (quarter), A6 (quarter), Bb6 (quarter), C7 (quarter). The lyrics are written below the staff, with hyphens under 'ref' and 'uge'.

Text: from the English translation of *The Roman Missal*, © 2010, International Commission on English in the Liturgy Corporation (ICEL).
Music: Columba Kelly, OSB, © 2012, Order of Saint Benedict, Saint Meinrad Archabbey, Published by OCP. All rights reserved.

On Eagles Wings

Joncas

Ritual Song Hymnal #795

CONCLUDING RITE

SENDING FORTH: *The Glory of These Forty Days*

ERHALT UNS HERR

Ritual Song Hymnal #570