

THE HOLY FAMILY OF JESUS, MARY, AND JOSEPH

DECEMBER 26, 2021

INTRODUCTORY RITE

8:30AM GATHERING SONG: *Good Christian Friends, Rejoice*

IN DULCI JUBLIO

Ritual Song Hymnal #526

11:15AM GATHERING SONG: *Once in Royal David's City*

IRBY

Ritual Song Hymnal #543

Verse 1 - **Cantor;** Verse 2 - **Men;** Verse 3 - **Choir;**

Verse 4 - **Women;** Verse 5 - **All**

PENITENTIAL ACT

GLORY TO GOD

Jones

Hymnal Insert Card **Page #1**

COLLECT PRAYER

LITURGY OF THE WORD

FIRST READING:

1 Samuel 1:20-22, 24-28

Samuel, as long as he lives, shall be dedicated to the Lord.

8:30AM RESPONSORIAL PSALM: *Psalm 84: Blessed Are They Who Dwell*

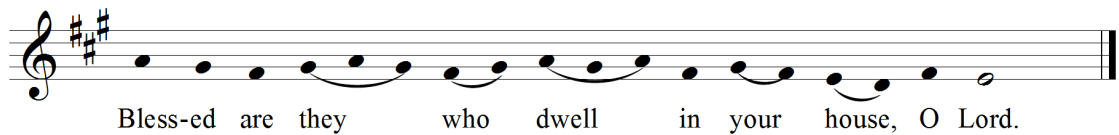
Alonso

Refrain:



Bless-ed are they who dwell in your house, who dwell in your house, O Lord.

Refrain:



Antiphon Text © 1969, 1981, 1997, International Committee on English in the Liturgy, Inc. (ICEL)
Music by Columba Kelly, O.S.B., © 1973, 1993, Saint Meinrad Archabbey. All Rights Reserved.

Psalm 84:2-3, 5-6, 9-10.

How lovely is your dwelling place,
O LORD of hosts.

My soul is longing and yearning
for the courts of the LORD.

My heart and my flesh cry out
to the living God. *R/.*

Blessed are they who dwell in your house,

forever singing your praise.

Blessed the people whose strength is in you,
whose heart is set on pilgrim ways. *R/.*

O LORD God of hosts, hear my prayer;
give ear, O God of Jacob.

Turn your eyes, O God, our shield;
look on the face of your anointed. *R/.*

Text: *The Revised Grail Psalms*, © 2010, Conception Abbey and The Grail, admin. by GIA Publications, Inc.

SECOND READING:

1 John 3:1-2, 21-24

We are called children of God. And so we are.

GOSPEL ACCLAMATION: *Christmastime Alleluia*

Chepponis

Hymnal Insert Card Page #3

GOSPEL READING:

Luke 2:41-52

His parents found Jesus sitting in the midst of the teachers.

NICENE CREED

Hymnal Insert Card Page #4

GENERAL INTERCESSIONS

Hymnal Insert Card Page #5



LITURGY OF THE EUCHARIST

Our weekly collection is taken up by leaving your offering in the baskets as you enter or leave church. We are especially grateful to any of our visitors for their financial support.

8:30AM PREPARATION OF GIFTS

Instrumental

11:15AM PREPARATION OF GIFTS (CHORAL ANTHEM):

Sans Day Carol

setting by Stephen Caracciolo (b. 1962)

Now the holly bears a berry as white as the milk, and Mary bore Jesus, who was wrapped up in silk: and Mary bore Jesus Christ, our Savior for to be, and the first tree in the greenwood, it was the holly.

Now the holly bears a berry as green as the grass, and Mary bore Jesus, who died on the cross: and Mary bore Jesus Christ, our Savior for to be, and the first tree in the greenwood, it was the holly.

Now the holly bears a berry as black as the coal, and Mary bore Jesus, who died for us all: and Mary bore Jesus Christ, our Savior for to be, and the first tree in the greenwood, it was the holly.

Now the holly bears a berry, as blood is it red, then trust we our Savior, who rose from the dead: and Mary bore Jesus Christ, our Savior for to be, and the first tree in the greenwood, it was the holly.

~ Text: 19th cent. Cornish

EUCHARISTIC PRAYER

HOLY, HOLY, HOLY: *A Community Mass*

Proulx

Hymnal Insert Card **Page #6**

MEMORIAL ACCLAMATION: *A Community Mass*

Proulx

Hymnal Insert Card **Page #6**

GREAT AMEN: *A Community Mass*

Proulx

Hymnal Insert Card **Page #7**

COMMUNION RITE

LAMB OF GOD: *Mass of the Angels and Saints*

Janco

Hymnal Insert Card Page #7

COMMUNION SONGS:

The People Who Walked in Darkness

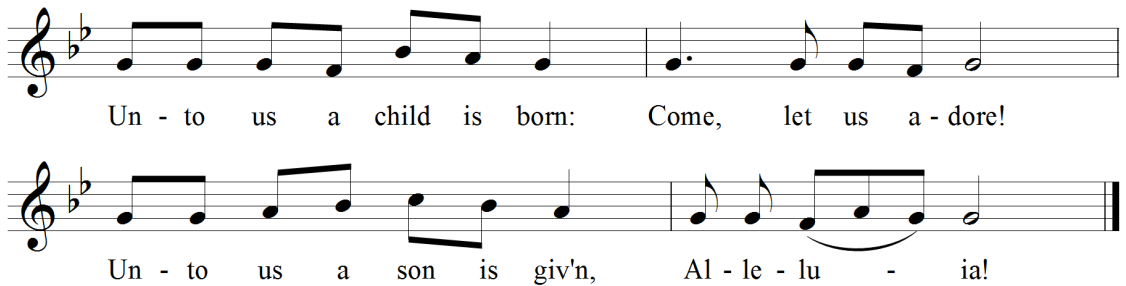
Morris

Ritual Song Hymnal #538

11:15AM: *Unto Us a Child Is Born*

Waddell

Refrain:



Un - to us a child is born: Come, let us a - dore!

Un - to us a son is giv'n, Al - le - lu - ia!

Text: *Quem Vidistis*, adapted by Chrysogonus Waddell, O.C.S.O.
Tune: Plainchant from *Liber Usualis*, adapted by Chrysogonus Waddell, O.C.S.O.
© 1994, World Library Publications, All rights reserved.



CONCLUDING RITE

SENDING FORTH: *Joy to the World*

ANTIOCH

Ritual Song Hymnal #518

Reproduced with Permission: OneLicense.net License #A-722329.